

connecting

We combine cleanliness and durability
with high efficiency



FM LEAN-News!

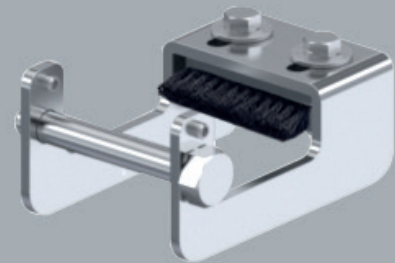
Wheel Brushes For ESD Wheels as attachment kits

Stay clean!

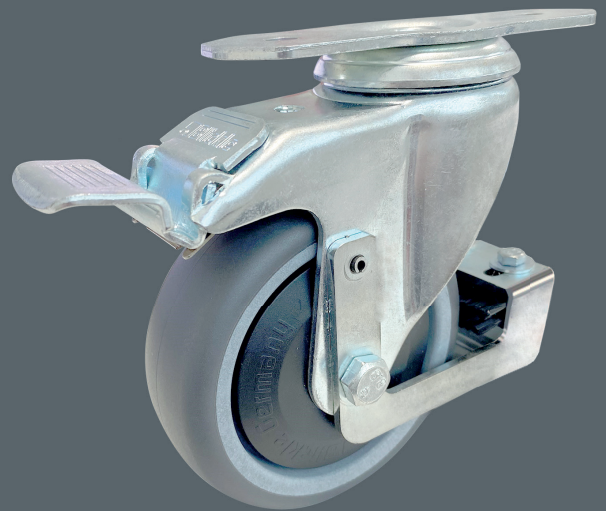
In highly sensitive production environments where electrostatic discharges (ESD) must be avoided, special solutions are required. Our wheel brushes for ESD wheels offer just that – **reliable and gentle cleaning of wheel treads** that protect your delicate equipment and components in the long term.

Using high-quality materials, our wheel brushes ensure a **durable and efficient lifespan under demanding industrial applications**. Thanks to innovative manufacturing techniques, our wheel brushes provide unmatched cleaning performance and ensure precise work results, maintaining your production quality.

Our wheel brushes for ESD wheels are the result of joint product developments with our **partner Bickie, the world leader in wheels**. We guarantee products of the highest quality that meet the stringent requirements of modern industrial and production environments.




Wheel brushes as attachment kit
Item No.: 05.02253.00



Application Example

What makes our wheel brushes special?

- Optimal adaptation to specific requirements through various sizes and designs
- Made from premium materials, our wheel brushes withstand the toughest conditions and ensure a long service life
- Prevention of electrostatic discharges to protect sensitive electronic components 
- Quick and easy readjustment and replacement in case of wear
- Suitable for common wheel housing types from the world market leader Bickie

LEANPLUS



Sustainability
through the durability
and reusability of the
wheel brushes



Standardization
of cleaning and
maintenance procedures



Minimization
of waste such as downtime
for cleaning/maintenance



Efficiency Improvement
through fast and consistent
cleaning of the wheels

Discover our industrial wheel brushes:
Trust in quality that optimizes your production processes and
reduces costs!

FIND OUT NOW!

We are always available to answer any questions you may have.

+49 7262 6186-0

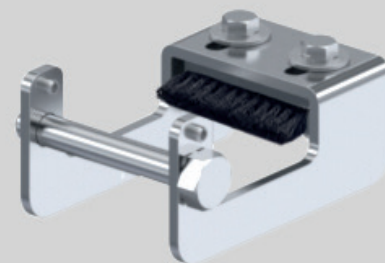
vertrieb@fm-systeme.com

Technical Specifications

Wheel Brush for ESD Wheels as an attachment kit

Set consisting of:

- 1x Foot Guard
- 2x Nut
- 2x Tension Pin
- 1x Strip Brush
- 4x Washer
- 1x Axle Screw
- 2x Screw

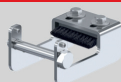


Rad-Ø
[mm]

Radbreite
[mm]

Set for Bickler wheel housing types **LE / B / LKPA / BKPA**

05.02253.00



80

32

Set for Bickler wheel housing types **LKPA / BKPA**

05.02254.00



100

32

05.02255.00



125

32

Set for Bickler wheel housing types **LE / B**

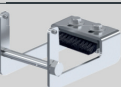
05.02256.00



100

32

05.02257.00



125

32

Contact us to learn more about our specialized wheel brushes for ESD wheels. Protect your sensitive components while ensuring efficient cleaning. With our products, you are always on the safe side.

CONTACT US NOW

Are you looking for the right LEAN wheels?

Discover a wide selection of swivel and fixed wheels in one of our previous promotions. Simply use the QR code or click on the banner.



https://www.fm-systeme.de/fileadmin/user_upload/2024-04-12_Flyer-LEAN-Castors_en.pdf

connecting
We combine your applications
with maximum mobility

FM LEAN-News!

LEAN Castors
New! For aluminium profiles

Stay mobile

We have recently added LEAN castors and matching mounting plates for aluminium profiles from the world market leader Bickler® to our portfolio. This enables quick and easy installation on almost any profile cross-section.

You can choose from castors with diameters of 75 - 125 mm in various versions (see specification p. 2) robust fixed castors

swivel castors with and without locking function or ESD-safe models. They all feature smooth, non-marking running, first-class finish and are maintenance-free.

With their versatility and easy handling, the new LEAN castors guarantee flexibility in dynamic production environments - our contribution to the simple implementation of LEAN IN PRACTICE!

What is special about our LEAN castors for aluminium profiles?

- Compatible with almost all aluminium profile cross-sections
- Simply to assemble and disassemble
- Smooth running and long service life due to special variable riveting
- Double ball bearings in the swiveling ring
- ESD-capable versions for protection against electrostatic discharge

LEANPLUS

- ① **Modularity and scalability**
Due to simple mounting of the rollers on various profile cross-sections
- ② **Facilitates the control of transport tasks**
Due to smooth-running and directionally stable castors
- ③ **Increased work safety**
Due to reduced physical strain when transporting heavy components

From mobile workstations to pallet trolleys - We plan and configure your customized constructions from our aluminium profile system.

REQUEST A QUOTE NOW!

Please do not hesitate to contact us with any questions and concerns
+49 7262 6186-0 vertrieb@fm-systeme.com