

connecting

We combine your applications  
with maximum mobility



FM LEAN-News!



## LEAN Castors New! For aluminium profiles

Stay mobile

We have recently added **LEAN castors and matching mounting plates for aluminium profiles** from the world market leader **Blickle®** to our portfolio. This enables quick and easy installation on almost any profile cross-section.

You can choose from castors with diameters of **75 - 125 mm** in various versions (see specification p. 2): robust fixed castors,

swivel castors with and without locking function or ESD-safe models. They all feature smooth, non-marking running, first-class finish and are maintenance-free.

With their versatility and easy handling, the new LEAN castors guarantee flexibility in dynamic production environments - our contribution to the simple implementation of LEAN IN PRACTICE!

### What is special about our LEAN castors for aluminium profiles?

- Compatible with almost all aluminium profile cross-sections
- Simply to assemble and disassemble
- Smooth running and long service life due to special variable riveting
- Double ball bearings in the slewing ring
- ESD-capable versions for protection against electrostatic discharge

### LEANPLUS

- + **Modularity and scalability**  
due to simple mounting of the rollers on various profile cross-sections
- + **Facilitates the control of transport tasks**  
due to smooth-running and directionally stable castors
- + **Increased work safety**  
due to reduced physical strain when transporting heavy components

From mobile workstations to pallet trolleys –  
We plan and configure your customised constructions  
from our aluminium profile system.

**REQUEST A QUOTE NOW!**

Please do not hesitate to contact us with any questions and concerns

☎ +49 7262 6186-0 ✉ [vertrieb@fm-systeme.com](mailto:vertrieb@fm-systeme.com)

## Technical specification

# Apparatus castors for aluminium profiles with screw-on plate

FM-LPA/BPA · FM-LKPA/BKPA series

### Enclosure LPA/BPA, LKPA/BKPA series:

- sheet steel, galvanised, blue passivated, Cr6-free

### Steering housing LPA/BPA, LKPA/BKPA series:

- double ball bearings in the swivel head
- stable centre pin
- minimal swivel head play, smooth running, long service life due to the special dynamic Blicke riveting
- "stop-fix" locking lever made of plastic for the LPA series or steel for the LKPA series

### Wheel TPA series:

- Tread: high-quality thermoplastic rubber elastomer (TPE), hardness 85 Shore A, colour grey, non-marking, oil-containing

### Wheel centre TPA series:

- high-quality polypropylene, unbreakable, colour silver-grey (variant "-ELS" colour black)

### Wheel PATH series:

- Tread: high-quality thermoplastic polyurethane (TPU), hardness 94 Shore A, colour dark grey, non-marking, non-contact discolouration

### Wheel centre PATH series:

- high-quality polyamide 6, break-resistant, colour silver-grey

### Wheel POES series:

- Tyres: high-quality elastic solid rubber "Blicke SoftMotion", hardness 55 Shore A, colour grey, non-marking

### Wheel centre POES series:

- high-quality polyamide 6, unbreakable, colour black

### Load capacity TPA, PATH, POES series:

- 75–120 kg



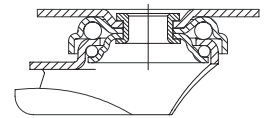
Swivel castors



Fixed castors



Swivel castors with brake „stop-fix“



Wheel-Ø [mm]	Wheel-width [mm]	Load capacity [kg]	Type of bearing	Total height [mm]	Plate size [mm]	Screw hole Distance [mm]	Ø [mm]	Radius of swivel castor [mm]
--------------	------------------	--------------------	-----------------	-------------------	-----------------	--------------------------	--------	------------------------------

### FM-LPA/FM-LKPA-TPA series (ESD variants available in electrically conductive version, non-marking grey, article no. suffix -ELS)

FM-LPA-TPA 75KF-291	FM-BPA-TPA 75KF-29 *	FM-LPA-TPA 75KF-291-FI +	75	25	75	Ball bearing (C)	100	90 x 40	65	8,5	29
FM-LKPA-TPA 80KF-29	FM-BKPA-TPA 80KF-29	FM-LKPA-TPA 80KF-29-FI	80	32	120	Ball bearing (C)	111	120 x 40	80	8,5	40
FM-LKPA-TPA 101KF-29	FM-BKPA-TPA 101KF-29	FM-LKPA-TPA 101KF-29-FI	100	32	120	Ball bearing (C)	136	120 x 40	80	8,5	40
FM-LKPA-TPA 126KF-29	FM-BKPA-TPA 126KF-29	FM-LKPA-TPA 126KF-29-FI	125	32	120	Ball bearing (C)	161	120 x 40	80	8,5	40

### FM-LPA/FM-LKPA-PATH series (ESD variants available in electrically conductive version, non-marking grey, article no. suffix -ELS)

FM-LPA-PATH 75KF-291	FM-BPA-PATH 75KF-29 *	FM-LPA-PATH 75KF-291-FI +	75	25	75	Ball bearing (C)	100	90 x 40	65	8,5	29
FM-LKPA-PATH 80KF-29	FM-BKPA-PATH 80KF-29	FM-LKPA-PATH 80KF-29-FI	80	32	120	Ball bearing (C)	111	120 x 40	80	8,5	40
FM-LKPA-PATH 101KF-29	FM-BKPA-PATH 101KF-29	FM-LKPA-PATH101KF-29-FI	100	32	120	Ball bearing (C)	136	120 x 40	80	8,5	40
FM-LKPA-PATH 126KF-29	FM-BKPA-PATH 126KF-29	FM-LKPA-PATH126KF-29-FI	125	32	120	Ball bearing (C)	161	120 x 40	80	8,5	40

### FM-LKPA-POES series

FM-LKPA-POES 102KF-29-SG	FM-BKPA-POES 102KF-29-SG	FM-LKPA-POES 102KF-29-FI-SG	100	32	120	Ball bearing (C)	136	120 x 40	80	8,5	40
FM-LKPA-POES 127KF-29-SG	FM-BKPA-POES 127KF-29-SG	FM-LKPA-POES 127KF-29-FI-SG	125	32	120	Ball bearing (C)	161	120 x 40	80	8,5	40

\* Fixed castors with plate size 120 x 40 mm and screw hole distance 80 mm

+ Version with plastic locking lever as standard



TPA series

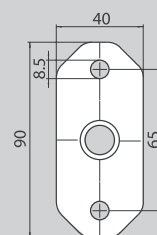


PATH series

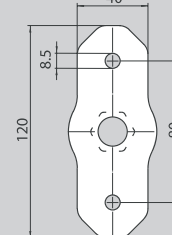


POES series

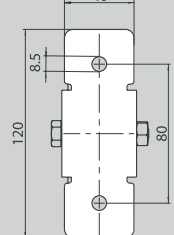
### Mounting plate versions



Swivel Castors Ø 75 mm



Swivel Castors Ø 80 - 125



Fixed Castors