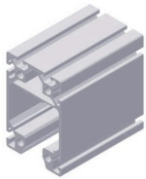
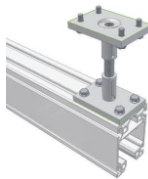


**Ergonomische Lösungen
in der Handhabungstechnik**
variabel - flexibel - effizient

Aluprofil-Schienensystem



Profil 80x120



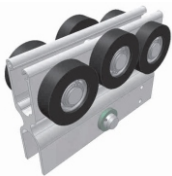
Aufhängung



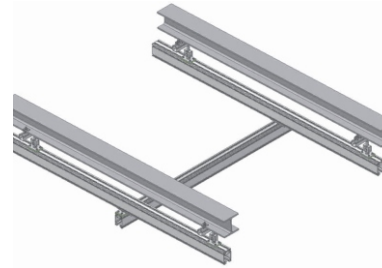
Profil 80x180



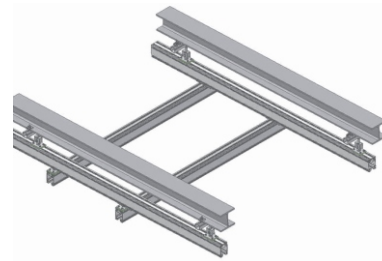
Kabelwagen



Wagen

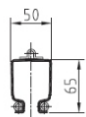


Einschienen-Hängekran

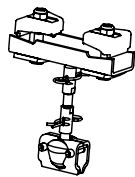


Zweischienen-Hängekran

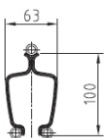
Stahl-Schienensystem



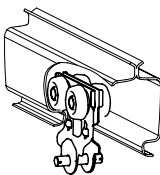
Profil 1



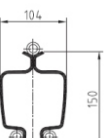
Aufhängung



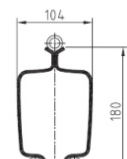
Profil 2



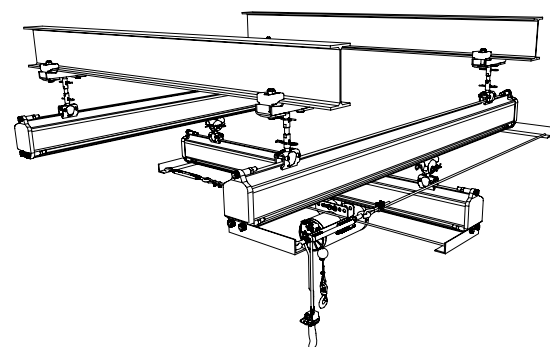
Wagen



Profil 3



Profil 4



**Einschienen- oder Zweischienen-Hängekran
Einschienenbahn mit Kurven**

HANDHABUNGSSYSTEME

Hubsysteme



E-Kettenzug



Seil-Balancer



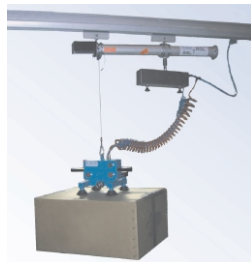
Starrlift



Druckluft-Kettenzug



Schlauchheber



**Druckluftbalancer
Baltrol**

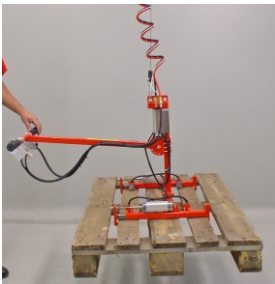


**ZERO-Balancer,
Autom. Lasterkennung**

Anwendungsbeispiele



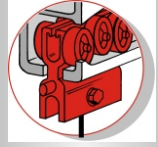
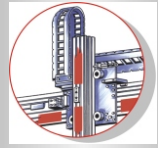
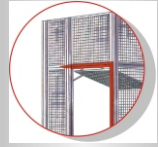
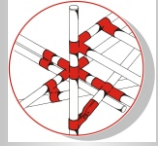
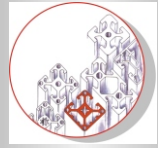
Holzplattengreifer



Palettengreifer



**Flächenschienensystem
Starrlift-Teleskopachse u. Greifer**



FM SYSTEME GmbH
FÖRDER- und MONTAGETECHNIK
Industriegebiet Tiefental
Jakob-Dieffenbacher-Str. 1
D-75031 Eppingen
Telefon: +49 7262 6186-0
Fax : +49 7262 6186-59
info@fm-systeme.com
www.fm-systeme.com

Ihr Ansprechpartner: